

Fully Fitted & Managed Office in Mayfair



2 Park Street, W1

Part ground floor (west) - 2,159 sq ft

- Fully Fitted & Managed Office (see plan and photos overleaf)
- Recently remodelled reception
- Air conditioning
- Raised floors with data cabling and fibre
- New ceilings and LED lighting
- 3 passenger lifts
- 24 hour access and security
- Cycle racks, 4 new showers and new lockers



Location

The building occupies a corner position at the junction of South Street and Park Street, close to Park Lane and Hyde Park. Bond Street, Green Park and Marble Arch are the nearest underground stations and numerous bus routes pass close by.

The immediate location abounds with top-class restaurants and private clubs, and Shepherd Market is moments away with its eclectic mix of pubs, sandwich bars and restaurants.

Description

The floor has been recently refurbished to provide the following:

- Reception / waiting area
- 20 workstations (1,400mm desks)
- 8 person board room
- 1 x private office
- 1 x acoustic meeting pod
- Kitchen / breakout area
- Fully cabled with dedicated fibre line

Floor areas

The floor area is 2,159 sq ft.

Lease

New managed Lease direct for the Landlord for a term to be agreed.

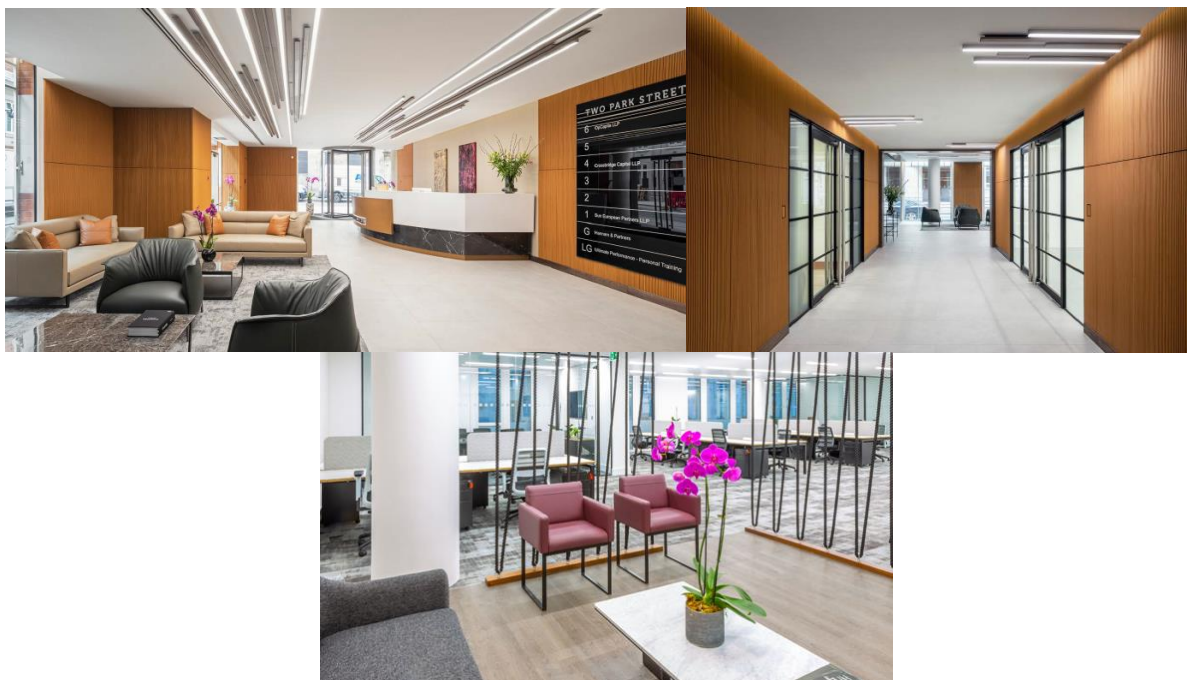
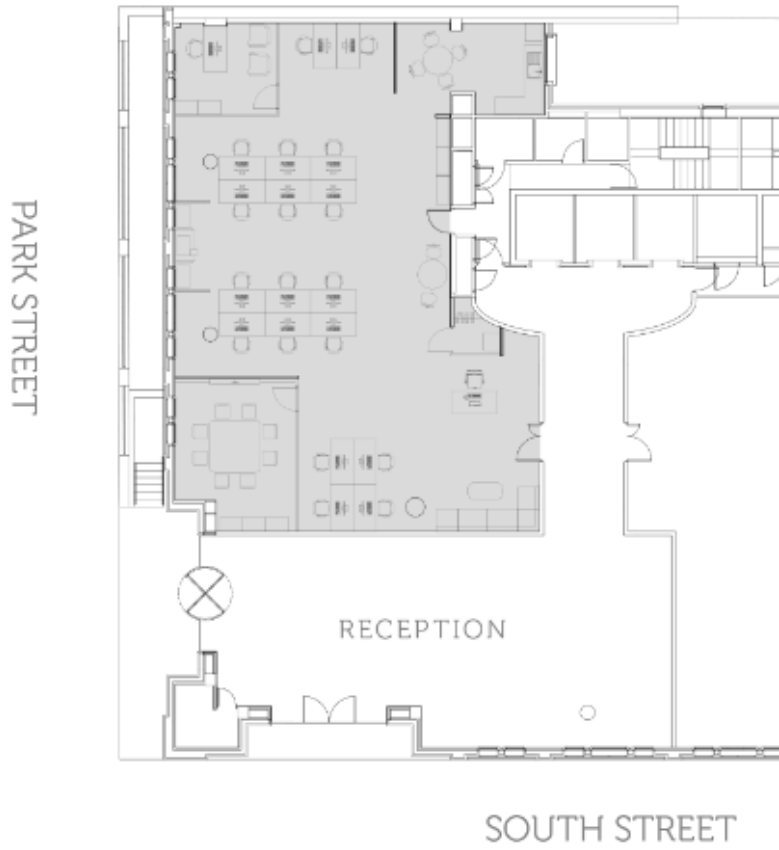
Managed Rent

£230.00psf.

Viewings - Through Ed Griffin (020 7898 3210), Nigel Wallnofer (07773 375 718) or Mike MacKeith (07831 361 722).



Layout plan and photos



Mallam Advisers LLP gives notice that these particulars are set out as a general outline only for the guidance of intending Purchasers or Lessees and do not constitute any part of an offer or contract. Details are given without any responsibility and any intending Purchasers, Lessees or Third Parties should not rely on them as statements or representations of fact, but must satisfy themselves by inspection or otherwise as to the accuracy of each of them. No Partner/Member or any person in the employments of Mallam Advisers LLP has any authority to make any representation or warranty whatsoever in relation to this property.